

Trumpet playing is muscle work:

- the fine motor manipulation of the embouchure muscles
- the activity of the whole body of the player

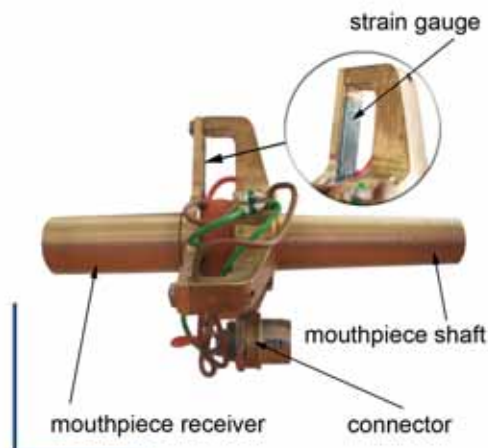


Target of the new type of transducer is,

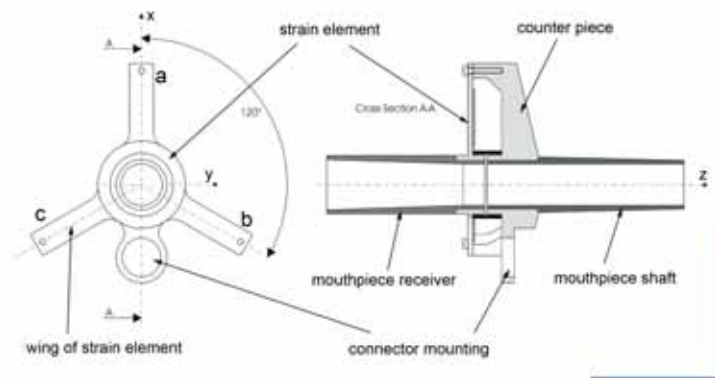
to measure the mouthpiece force in three dimensions. These values contain a lot of embouchure information.

Demands on the measurement system:

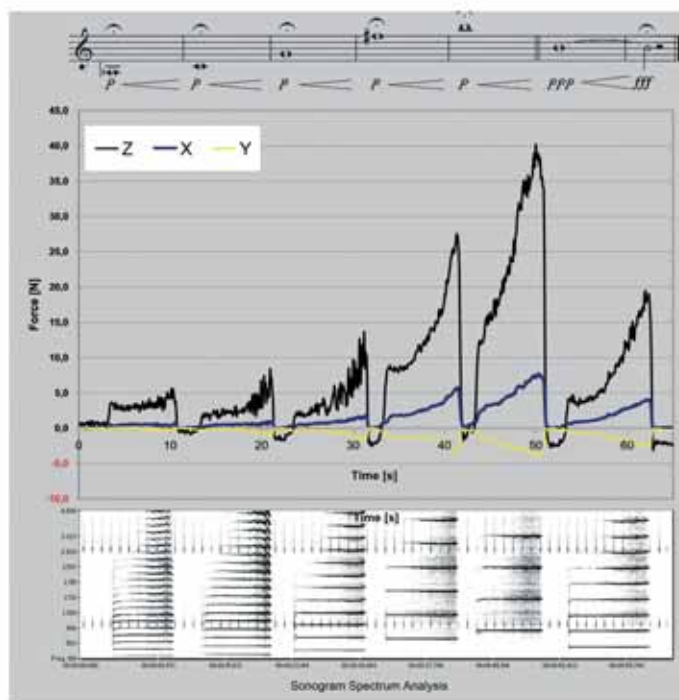
- Easily attachable to a personal trumpet – mouthpiece combination
- With as little influence on the playing situation as possible
- Measurement of the force in three dimensions
- Real-time display
- Simultaneous sound recording



The Transducer Design



First Results



Data Acquisition Software

